

COMPASS Pathways graduate programme in Research and Development (R&D)

**Are you looking for a career in research and development,
where you get to make a significant difference to people's lives?**

COMPASS Pathways is a mental health care company. We are committed to accelerating patient access to evidence-based innovation in mental health. We're driven by improving the lives of those who are suffering with mental health challenges and who are not helped by existing treatments. Our first major initiative is developing COMP360 psilocybin therapy for people suffering with treatment resistant depression.

Preclinical research is fundamental to our mission, and we have a strong team of committed and talented scientists. Our multidisciplinary preclinical team brings together a range of subject matter experts to deliver innovation at the earliest stages of the drug discovery and development process. We are now launching a graduate programme, which will offer life science graduates the opportunity to kickstart a career in R&D at COMPASS.



COMPASSION
Navigating Mental Health Pathways

What you can expect

We are offering a two-year programme in five preclinical areas: discovery pharmacology, cellular and molecular biology, translational and systems neuroscience, pharmacokinetics/ADME, and toxicology. Participants will be employed in permanent, full-time positions as preclinical research associates at COMPASS.

Our programme will offer recent graduates (or postgraduates) an insight into industry, an opportunity to learn project management and technical skills, and a broad knowledge of drug discovery. By the end of the two years, participants should have:



Experience of working as an early career scientist within a preclinical function



An understanding of modern and multi-modal approaches to mental health care pathways



A good understanding of how preclinical drug discovery processes are applied in practice



Some of the leadership skills necessary for scientists to thrive in a cross-functional and geographically distributed team

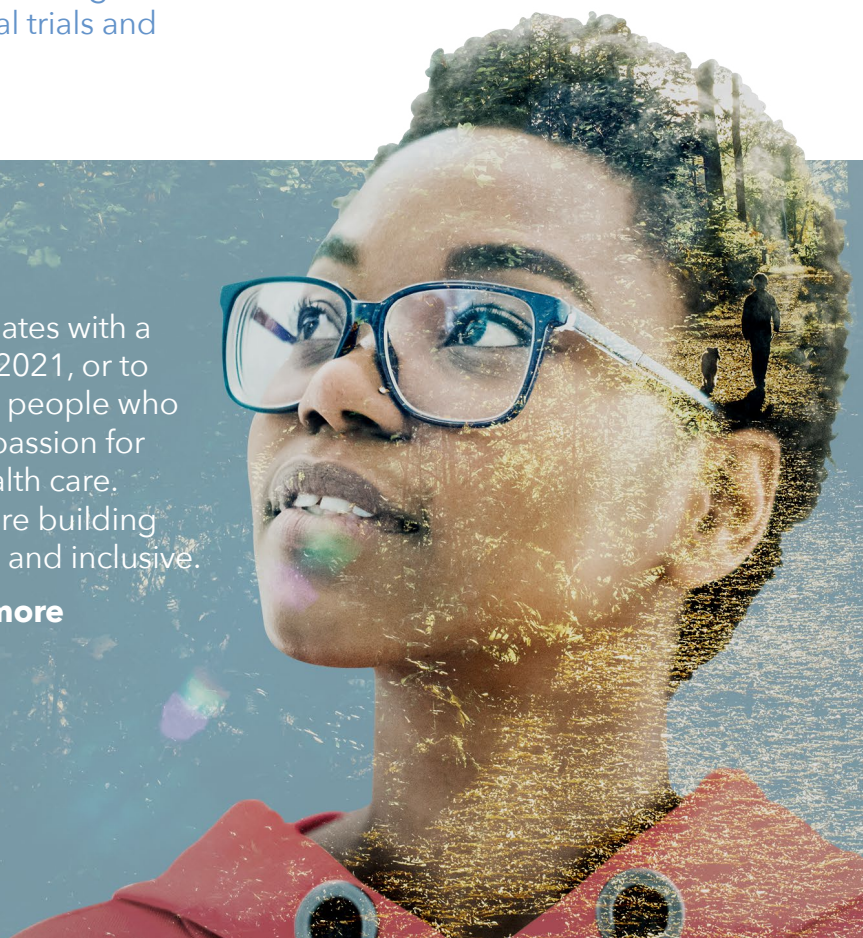


An overview of the drug development process and how functions work together to take a drug through clinical trials and ultimately to market

Who should apply

We're looking for talented life science graduates with a Bachelor's, Master's or PhD gained in 2020, 2021, or to be gained before December 2022. We want people who are bright, motivated and ambitious, with a passion for research and a desire to improve mental health care. We take our company values seriously and are building a team that is compassionate, bold, rigorous and inclusive.

If this sounds like you, [click here to read more and apply](#).



COMPASSION
Navigating Mental Health Pathways